

FALL 2023

Your neighborhood needs your help on November 15th and 16th!

A boundary study being undertaken by Baltimore County Public Schools could divide our Wiltondale neighborhood in two—sending half of our children across town to West Towson Elementary.

BY SARAH DAVID AND LAURA LINDSTROM

As a proud product of Baltimore County Public Schools, it was important to me to find a place to live where our children had the option of an excellent public education. When we moved to Wiltondale, though, we didn't appreciate that it would be so much more than a lovely home in a good school district—it would be a true neighborhood. In a time where polling indicates that less than 60% of Americans can name just one of their neighbors—in Wiltondale, we know and care for one another as neighbors. This neighborhood teaches our kids to swim together, play together, celebrate holidays and seasons together, shovel walks and pick up leaves for one another, babysit one another, and be in and care for a community. We don't need a sign to show people we are a neighborhood because it is what we do in Wiltondale that makes us Wiltondale.

This is why there has been so much attention and concern about the Central Area Elementary School Capacity Relief Boundary Study being undertaken by Baltimore County Public Schools. The goal is admirable: to increase diversity and decrease overcapacity in schools across the county. However, the committee has, in a reflection of neither of these goals, considered options to divide our Wiltondale neighborhood in two—sending half of our children across town to West Towson Elementary. While West Towson Elementary School is an excellent institution, our children will no longer be able to walk to school or rely on neighbors for sports and school-based activities, undermining the neighborhood unity we have worked so hard to foster.

In a true testament to Wiltondale's strength of community, 131 of us have commented on this proposal after many of our neighbors, who have jobs, children, and a thousand other commitments, went door to door to every house here asking for help. Many of those same neighbors also attended meetings, called elected officials, engaged with committee members, and worked hard to make our voices heard. We were by far the loudest voice in opposition, and yet, the committee proceeded with plans that would send half our children to school across town.

There are four proposals at issue now. We have made progress, and three of the remaining proposals would keep our kids at Stoneleigh. Please consider attending the meeting even if your children are grown or already in another school.

Please consider taking the time to show up for your neighbors—because it is what we do in Wiltondale that makes us Wiltondale.

To get added to the neighborhood email list on this issue, email elizawalter@gmail.com.

HOW YOU CAN HELP

1. **Show up in person at the public info sessions on November 15 (7–8 p.m. at Cockeysville Middle) and November 16 (7–8 p.m. at Loch Raven High).**

This is crucial as it is how we can ensure the committee hears our feedback on the options. We will provide you with a one-pager of critical points. We need an overwhelming and large attendance at these meetings. If you can attend, please email laura.d.lindstrom@gmail.com with the date(s) you plan to attend to coordinate carpool and document distribution.

2. **Write a public comment on the Central Area Elementary School Capacity Relief Boundary Study website (link and QR code below).**

Even if you already did this, please submit another comment! Be sure to identify the Wiltondale neighborhood and use its boundary numbers since the committee may not be familiar with our area ("PB1601 and PB1602 are both part of Wiltondale and should not be split").

COMMENT HERE

<https://bit.ly/40pAGY4>



The Green Corner

- **Trash** Tuesdays | **Recycling:** Thursdays
- **Full schedule of trash, recycling, yard waste, and holiday pickups:** <http://bit.ly/37OuSgg>

YARD WASTE REMINDERS

- **Upcoming pickups:** 11/19 and 12/3
- **Grass and leaves:** Must be placed in heavy-duty (2-ply) paper lawn and leaf bags.
- **Branches and limbs:** Must be no larger than three inches in diameter, no longer than three feet and tied in bundles.



All neighbors current with their dues may participate. See our Facebook page for prohibited items.

Directory Updates

If your information in the neighborhood directory requires updating, the preferred method is to use the online form on the website (wiltondale.org/membership/#directory). Your information will appear exactly as provided, so enter it accurately.

You can also submit a directory update by sending your address, complete name(s), email, phone number, and children's names to the address below:

Wiltondale Improvement Association, Inc.
P.O. Box 42446
Towson, MD 21284-2446
Attn: Directory Update

NEW TO THE NEIGHBORHOOD?

Let us know if you've recently moved in or know of any newcomers! Please email Secretary Phyllis Gray at secretary@wiltondale.org so we can give a warm Wiltondale welcome.

Architectural Review Form

Any alterations to home exteriors require approval by the WIA Architectural Committee. Please complete the *Proposed Improvement Architectural Review Form* (wiltondale.org/architectural-review-process) and deliver it to WIA President Ann McAvooy or Vice President Alex Kelly with any applicable drawings and color/material samples at least 30 days before the start date. For significant alterations, we highly recommend discussing your plans with immediate neighbors prior to submittal. Feel free to email questions to Chairman Fiver Soraruf at arch@wiltondale.org.



FULL SERVICE INDEPENDENT OPTICAL SHOP

See the *Difference* Independence Makes

ABO Certified Opticians
Outside Prescriptions Welcomed
No Appointment Necessary for Opticianry Services
Eye Exams & Contact Lens Fittings Available by Appointment

Wiltondale Race for Greenwood Park

This year's 5K took place the morning of the Triangle Halloween party, allowing folks to get a little more mileage out of their costumes. Whether they dressed up or not, we offer our hearty congratulations to the 97 registered runners (fun and otherwise) and our sincere gratitude to the sponsors who contributed more than \$13,000 to the maintenance, upkeep, and capital improvements of Greenwood Park. We trust you'll go gaga over the safe and fun experiences you and your families can look forward to!



TOP FINISHERS

1-MILE FUN RUN

1. Bradley Gorsuch—7:07.2
2. Wren Vayda—7:14.9
3. Liam Hattrup— 9:14.0

12 & UNDER

- (M) Ty Dickensheets—22:43.1
 (F) Millie McAvoy —25:27.0

13-15

- (M) No Participant
 (F) Lila Salten—26:23.0

16-19

- (M) **Kieran Mischke—15:24.0**
Top Overall Finisher
 (F) Lila Salten—26:23.0

20-29

- (M) Max Birkner—19:22.2
 (F) No Participant

30-39

- (M) Mike Rochford— 22:18.2
 (F) Megan Hartings—23:37.2

40-49

- (M) Scott Gorsuch—22:41.3
 (F) **Abigail Pulcinella—21:56.2**
Top Female Finisher

50-59

- (M) Peter Darwin—21:53.6
 (F) Beth Tober— 27:08.9

60+

- (M) Marc Hartstein—28:13.9
 (F) Ellen Birkner— 28:09.1



WILTONDALE
 RACE FOR GREENWOOD PARK
 OCTOBER 29, 2023

A SPECIAL THANKS TO OUR SPONSORS!

Title Sponsor

Morgan Stanley
 Prumo, Kalvar & Associates

Platinum Sponsors



Gold Sponsors



Silver Sponsors



In-Kind Sponsors



Classifieds

Content blocked to protect information of minors.

Email newsletter@wiltondale.org for this issue's classifieds.

PLUMBING

I'm Michael Tracey, and my company is W.A. Gambrill, Inc. We are a plumbing company that has been in the area for over 50 years. We offer plumbing, heating, water heaters, boilers, drain cleaning, and sewer and water line replacement. Contact us at 410-823-8980.

December Events

Holiday Decoration Contest

Vie for the title of Most Whimsical (fun), Best Williamsburg Style (only natural greens and white lights), or Best In Show (top overall)!

The WIA will make a donation to the charity of each winner's choice.

Winter Holiday Event Sunday, 12/17 @ 5:30 p.m.

Cookies, cocoa, and some special holiday visitors.

Santa will be there at 6 p.m.!

Email Subscriptions

Please visit the Wiltondale website to subscribe/unsubscribe to these lists:

- **WIA-COP:** Information about community safety, security, crime prevention/alerts, etc.
- **WIA-Info:** General community information such as events, lost and found items/pets, zoning issues, solicitations for volunteers, etc.

WIA Board Meetings

Meetings take place on the second Tuesday of each month at 7:30 p.m. via Zoom. All residents are welcome and encouraged to attend!

UPCOMING MEETINGS

- November 14; December—none
- February—Annual meeting on Sunday, February 4, 2024; location TBD. Look for updates on Facebook and via the WIA-Info email list.

The WIA bylaws are available on the community website at wiltondale.org/bylaws. Minutes from past board meetings are also available by request (secretary@wiltondale.org).

Note from the Editors

If you would like to place a classified ad or have news, photography, artwork, or writing you would like to share with your neighbors, please email newsletter@wiltondale.org for possible inclusion in the next issue.

Thanks to **Kellie Langley** for funding the full-color print of our newsletter!



Kellie Langley, Realtor®

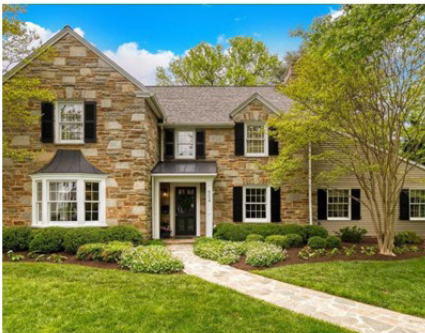
- *#1 TOP PRODUCING AGENT TOWSON OFFICE
- *Proud to be a Wiltondale Resident since 1996
- *Certified Negotiation Expert, CNE®
- *Luxury Property Specialist
- *Home Staging Expert®
- *Member, Towson Chamber of Commerce, Inc.



COLDWELL BANKER
REALTY

MY RECENT WILTONDALE SALES/LISTINGS:

504 WORCESTER ROAD
SOLD! \$1,075,000



504 WILTON ROAD
SOLD! \$992,000



610 HASTINGS ROAD
SOLD! \$790,000



828 Kenilworth Drive, Towson, 21204 410-823-2323 (O) 410-458-2836 (C) klangley@cbmove.com



PLATINUM SPONSOR OF THE WILTONDALE 5K!!!

