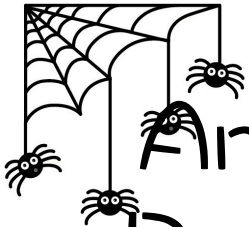




# October 2016 Community Newsletter

www.wiltondale.org

# WILTONDALE



## Annual Halloween Party and Parade

at the Triangle

**Sunday, October 30 @ 4-5:30pm**

Pizza, cookies, and drinks provided

Parade @ 4:30      Costume Contest @ 5:00

Emails will follow with more info and  
requests for cookie donations and volunteers

Questions? Contact [events@wiltondale.org](mailto:events@wiltondale.org)

### WIA Board Meeting

The next WIA Board meeting will be **Tuesday, October 11, 2016** in the Luther Room at Ascension Lutheran Church. If you are interested in knowing what was discussed at the last board meeting, minutes from the meetings are always available to interested residents. Please send requests to [secretary@wiltondale.org](mailto:secretary@wiltondale.org).

The 2016 Wiltondale Annual Party at the pool was once again a success. Thank you to everyone who helped out to make this a great party!



Musical chairs is always a favorite.

### YARD SALE OCTOBER 15

A community yard sale will be held on Saturday, **October 15th from 9 a.m. until noon**. Just like the spring yard sale, all residents are invited to participate. We will advertise with signs placed at prominent intersections, but please feel free to create and post your own advertisement with details of your sale items. The rain date is October 16th.



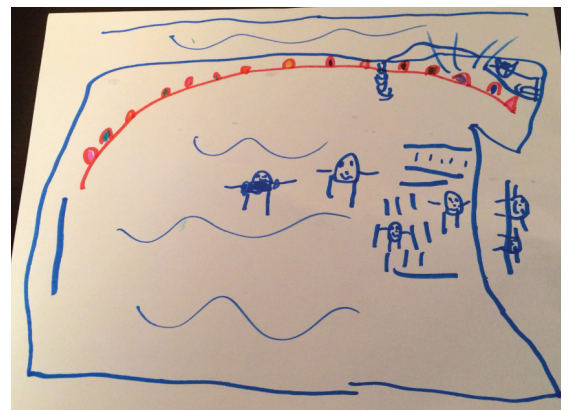
### Ascension Blessing of Animals October 1

A Blessing of Animals will be held behind Ascension Lutheran Church on **Saturday, October 1 at 10 a.m.** In honor of St. Francis' Day, the critters and their keepers will gather for a brief liturgy and an individual blessing of each pet. Dogs, cats, birds, lizards, gerbils, etc. are all welcome. Please have your pet on a leash or otherwise restrained. (Weather permitting.)

### WOW Meeting October 20

Please join the Women of Wiltondale on **Thursday, October 20th at 7pm**. We will meet at Sarah Christopher's home located at 21 Cedar Avenue. This is a great opportunity to meet new neighbors and catch up with existing friends. We ask that everyone bring a bottle of wine, appetizer, or a dessert to share. Dues remain at \$25 and checks can be made out to Women of Wiltondale. Dues can be brought to the meeting or dropped off to Kate Beach at 515 Yarmouth Rd. Please email [mandyward2@yahoo.com](mailto:mandyward2@yahoo.com) if you would like to be added to the email distribution list.

**The Fall Party and Chili Cook Off** is tentatively being scheduled for Sunday, October 23rd at the triangle. Stay tuned for more details.



Gabriel Spooner, 4 years old, enjoyed some cotton candy and was so excited about the balloon arch over the pool he had to draw it.

# **FB Fick Bros.** Roofing & Exterior Remodeling Company

**410-889-5525**

**www.fickbros.com**

## **Awarding Winning Craftsmanship for 100 Years**



**Roofing • Exterior Remodeling • Masonry**

## **E-MAIL SUBSCRIPTIONS REMINDER**

Wiltondale maintains two e-mail distribution lists. This is the most efficient method for the association to communicate with residents. Please visit the Wiltondale website to subscribe/unsubscribe to these lists.

**WIA-COP** – All information relating to community safety, security, crime prevention/alerts, etc.

**WIA-Info** – All general community information such as events, lost & found items (including pets), zoning issues, solicitations for volunteers, etc.

## **Home Improvements Require Board Approval**

The Architecture Committee of the Wiltondale Improvement Association is requiring **45 days** for review of property changes. Please plan ahead. Submission of forms and approval by the committee is **required** for all exterior home improvements. In addition, you are required to review your plans with your immediate neighbors prior to submitting forms. A "Proposed Improvement Review Form" can be downloaded from the Wiltondale website at [www.wiltondale.org](http://www.wiltondale.org). To have plans reviewed for approval, contact [arch@wiltondale.org](mailto:arch@wiltondale.org).

## **TOWSON COMMUNITY EVENTS**

### **Feet on the Street**

The final Feet on the Street block party for 2016 will be Friday, September 30 from 6:30 pm - 9:30 pm with the band Sons of Pirates.

**The Towson Farmer's Market and The Kenilworth Farmers' Market** will continue through November.

### **The 52th Annual Towson Chamber Golf Tournament**

Come out on October 24th, 10am start at the Country Club of Maryland.

go to: <http://www.towsonchamber.com/events/52nd-annual-towson-chamber-golf-tournament/> for more information.

### **Trick-or-Treat at Belvedere Square**

will be held on **Sunday, October 30th, 1-4 p.m.**

Belvedere Square's Fifth Annual "Trick or Treat at the Square" on Sunday, October 30th offers a fun-filled Halloween celebration for the young and young at heart. Among the treats for families: music by DJ Chris, a Thriller dance lesson and performance by The White Marsh Ballet Academy, surprises from Square merchants, food and drink specials, a costume contest (18 and under), pumpkin decorating (free while supply lasts), a new scary walkthrough, and more! Even pets are treated by Square neighbor Belvedere Veterinary Center and special guest appearance from the BARCS BFF Waggin. Ghosts and goblins welcome!

The event is open to the public and all activities are free, with the exception of the costume contest, which has a \$5 entry fee. 100% of the proceeds from the contest will benefit the Baltimore Animal Rescue and Care Shelter (BARCS).

## **EDITOR'S NOTE**

If you have any exciting news (and/or photos) you would like to share with your neighbors such as births, weddings, graduations, etc., please send it to [newsletter@wiltondale.org](mailto:newsletter@wiltondale.org) and it may be included in the next issue of the newsletter.

Submissions, changes, deletions and additions should be submitted by **Wednesday, October 26th**.

Thanks! Kelley Battaglia, Editor

If you haven't already paid your 2016 annual dues, you should be getting another notice from the WIA. Please remember to promptly send in your payment. This small fee helps the Wiltondale board support activities that make our neighborhood a wonderful place to live!

# Wiltondale COP

The Baltimore County Police Department (Precinct 6) continues to see an increase in car and shed break-ins and car theft in Towson neighborhoods. Please remember to lock your vehicles and sheds, and do not leave keys visible in your vehicles. If you are a victim of a break-in or theft, please report it to the police! Sending an email to the Wiltondale COP is appreciated, but the police must hear from you too.

As a resident of Wiltondale, you are a member of Wiltondale's Citizens on Patrol. Please join and support us any way you can. Sign up for patrol weeks, or send any questions or concerns to [cop@wiltondale.org](mailto:cop@wiltondale.org).

## Upcoming Events

### Mischief Night

Sunday, October 30

Consider supporting the Wiltondale COP and Towson Area COP (TACOP) by volunteering to patrol Wiltondale and adjoining neighborhoods. Email [cop@wiltondale.org](mailto:cop@wiltondale.org) to participate.

### Baltimore County Crime Lab Tour

Tuesday, November 1, 6:45 p.m.

Meet in lobby of Public Safety Building at 700 E. Joppa Road, Towson

RSVP to [cop@wiltondale.org](mailto:cop@wiltondale.org).

### Baltimore County 911 Center Tour

Tuesday, November 15, 6:45 p.m.

Meet in County Courthouse Lobby at 401 Bosley Avenue, Towson. (Back entrance is best.)

RSVP to [cop@wiltondale.org](mailto:cop@wiltondale.org).

If you see something suspicious in your community — say something.

Call 911 if emergency

Call 410-887-2222 if nonemergency

Call or email for concerns or questions

Kate Wendt or Karen Sorensen

[cop@wiltondale.org](mailto:cop@wiltondale.org)

To sign up for Wiltondale COP emails, visit <http://wiltondale.org/citizens-on-patrol/>.

## Welcome to Wiltondale

Please extend a welcome to our new neighbors!

Scott and Pam Gorsuch  
and their sons Collin, age 3 & Bradley, age 1  
511 Yarmouth Road  
410-790-2354 (Scott) 443-614-0958 (Pam)

John Shoaff and Laura Sonjara  
605 Worcester Road

Pritam and Havaca Ganguly  
534 Stevenson Lane

Matt and Kristin Kluga  
8 Aintree Road

Please email [secretary@wiltondale.org](mailto:secretary@wiltondale.org) if you are new to the neighborhood or if you know of any new neighbors who have recently moved in so that they may be welcomed by the hospitality committee. Updates to your directory information can be sent to [directory@wiltondale.org](mailto:directory@wiltondale.org).

## Waste Collection Schedule

Trash: Mondays, October 3, 10, 17, 24 & 31

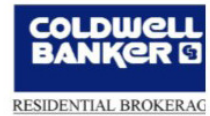
Recycling: Thursdays, October 6, 13, 20 & 27

Yard waste: Thursdays, October 13 & 27



## Kellie Langley, Realtor®

- \*Leading Real Estate Expert since 2004
- \*Proud to be a Wiltondale Resident since 1996
- \*Certified Negotiation Expert, CNE®
- \*Home Staging Expert®
- \*Member, Towson Chamber of Commerce, Inc.



**\*CONTACT ME FOR "EXPERT GUIDANCE WITH A PERSONAL TOUCH"!**

**Just Listed!!!  
525 Yarmouth Rd**



**Under Contract!!!  
8 Aintree Rd**



**New Price!!!  
625 Wilton Rd**



7402 York Rd, suite 204, Towson, 21204 410-823-2323 (O) 410-458-2836 (C) [klangley@cbmove.com](mailto:klangley@cbmove.com)

[www.ColdwellBankerHomes.com](http://www.ColdwellBankerHomes.com)