

December 2016

Dear Members of the Wiltondale Pool Community,

With the holidays fast approaching and snow in the air, pool season seems like a fond memory (or a hopeful wish). But the Pool Committee has been working since the close of our successful 60<sup>th</sup> season to prepare for Memorial Day 2017 and another summer of fun with family and friends.

We are writing to update you on plans for the pool renovation. As you remember, renovation work began before the start of last season, when we:

- Replaced the concrete deck and deck drains;
- Resurfaced the interior of the main pool;
- Installed 10-foot cutout for steps;
- Installed LED pool lights;
- Replaced guard chairs and skimmers;
- Installed a new diving board.

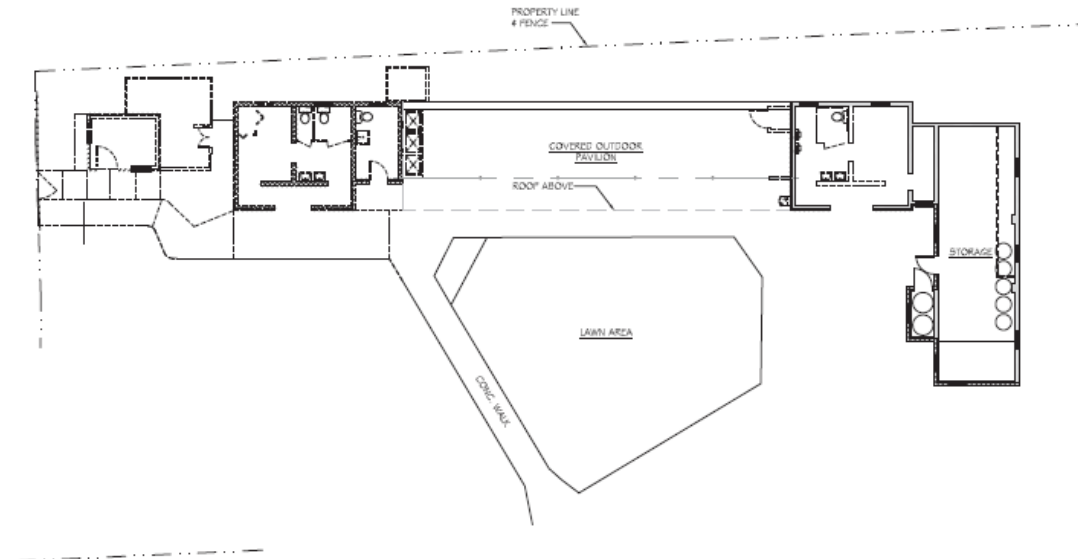
All of this work brought us into compliance with both national safety standards and the Americans with Disabilities Act.

While our plan had called for this to be an “off year” to allow us to build up some additional funds, last summer’s storm and the tree that destroyed the women’s room and pool office have accelerated the timetable to renovate these buildings. Since the end of the 2016 season, we have been working with L2M Architects to arrive at a design that will provide a significant upgrade to the restrooms, move the showers out of the pavilion area, and bring us up to code while containing costs as much as possible. We have also consulted with the Baltimore County Health Department, and the damaged structures cannot be simply repaired as today’s building codes are far more comprehensive than they were when the pool was built in 1956. Put simply: We cannot open for the 2017 season with spot-a-pots on the basketball court.

Planned improvements include:

- New, modern men’s and women’s rooms
- Showers in both the men’s and women’s rooms
- A family bathroom/changing room
- Widened walkways into the pool
- Dedicated entrance/exit gates
- New check-in station
- Additional space for seating under the pavilion

BEFORE:

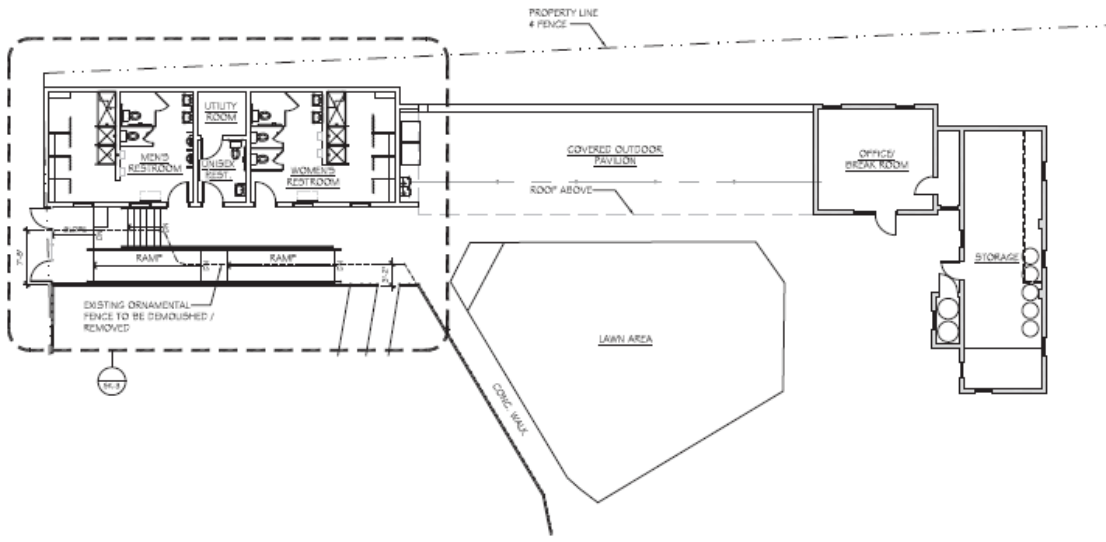


L2M  
ARCHITECTS  
SK-1

Drawn by [signature]  
SCALE: 1/32" = 1'-0"

Illustrated by [signature]  
11/2017

AFTER:



L2M  
ARCHITECTS  
SK-2

Proposed by [signature]  
SCALE: 1/32" = 1'-0"

Illustrated by [signature]  
11/2017

The images below provide a sense of what the renovated structure will look like. Although we are still finalizing colors and specifications, the shape and size are reflective of the needs of our pool and the code requirements—both in terms of the number of toilets/sinks/showers relative to the size of the membership and in mandated proximity to the entrance.



This work will begin early in the new year so that we can open on Memorial Day for the 2017 season. We invite your thoughts and feedback at [PoolCommittee@Wiltondale.org](mailto:PoolCommittee@Wiltondale.org). The deadline for submitting comments is **January 15, 2017**, and we will be reporting on the feedback and final plans at the Wiltondale Annual Meeting on January 21, 2017.

The Wiltondale Pool continues to be one of the most affordable pools in the Towson area, and we have worked to keep the assessment and membership dues as low as possible while also continuing to offer our members a summer calendar full of fun events and programs. We are in the process of securing financing from a local lending institution for this phase of the renovations so that we will not have to increase the dues for the 2017 season. This renovation will provide much needed modernizing of the pool facilities, ensuring member enjoyment and safety for years to come.

Thank you again for your continued membership and support of the Wiltondale Pool. Stay tuned for updates on the renovation progress, and Happy Holidays!

Sincerely,

The Wiltondale Pool Committee

Katie Kuhn, President

Garrett Glennon

Brian Shields

Angela Guevara

Kelly Sage

And

The Wiltondale Pool Renovation Committee

Nate Raider

Eric Hutter

Karen Sorensen